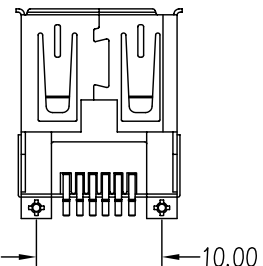
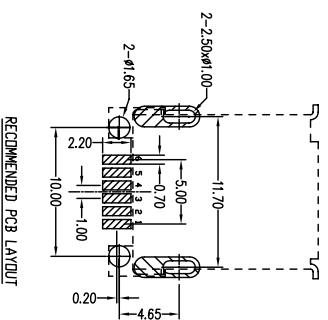


SECTION Y-Y'



REV.	ECN NO.	DATE
1.0	RELEASED	04/13/04

Specification:

- 2.1 Current rating: 1 A Max.
- 2.2 Dielectric withstanding voltage: 500 V(ac) for 1 min.
- 2.3 Contact resistance: 30M OHMS Max.
- 2.4 Insulation resistance: 100M OHMS Min.
- 2.5 Total mating force: 4.0 Kgf Max.
- 2.6 Total unmating force: 1.0 Kgf Min.
- 2.7 Temperature range: -40°C~85°C

MATERIAL

Shell: Copper Alloy.
 Insulator: PBT.
 Contacts: Copper Alloy.

HOW TO ORDER
 1394S-06 X XX-M1
 SERIES NO
 NO OF CONTACT
 HOUSING COLOR
 B : BLACK
 W : WHITE
 TERMINAL TYPE
 D1 : DIP HORIZONTAL
 D2 : DIP VERTICAL
 M1 : SMT HORIZONTAL
 S1 : SOLDER CONTACT PLATED
 HF : GOLD FLASH
 H1 : 3U"
 H6 : 30U"
 H7 : 1U"

比例 (SCALE)	MM	繪圖 (DRAW)	ZHAODENGMEI	圖名 (NAME) :	松嵐企業有限公司 TOWNES ENTERPRISE CO.,LTD
單位 (UNIT)	MM	審核 (CHECK)		料號 (PART NO)	1394S-06XXX-M1
一般公差 (TOLERANCE)		承認 (APPE)		圖號 (DRAW NO)	20040413-12(DF V-V)
		投影法 PROJECTION	第三角	IEEE1394 FEMALE SINGLE SMT	

0=±0.35
 .00=±0.2
 ANG=±5°